

Dasr4[®] series covering yarn

WS **Dasr4**[®]

Low Power

SHE *L* VIENO

Regular Power

SKB-300

No Power

SAMPLE BOOK





Low Power

Features of WS Dasley

WS30 36dtex(32d) Mix ratio: 25% polyurethane Nylon 75%

Because it is very soft stretch and is very good at heat setability, it is a thread with a function that form stability is very improved and it is hard to become a turbulent size. In addition, because there is no torque and the strength is strong, the walnut organization state is very clean. By putting it in the product which did not put the stretch yarn up to now, a new product development is considered, and it is possible to produce a product that can be hand-washed. With respect to the knit material 1 ply, to stabilize the knitted fabric by plating this yarn, it becomes a very light soft texture. In addition, the knitting becomes beautiful, and the material feeling of the main body is further upgraded. In addition, the ultra-fine double covering of soft power prevents obliqueness, and there is no torque and tekari such as conventional products inconspicuously, and productivity is improved. It exhibits the best function for full knitting and accessories of 10 gauges or more, as well as for connecting the knitted fabric.

Handling precautions

Please use a double-feeding thread so that you can completely plating knitting on the back side of the front knitting yarn.

Shrink with 100 to 120 degrees C steam, please perform elastic expression.

Washing shrinkage and solvent-based shrinkage are possible under normal conditions. It is usually possible to wash with detergent.

Tumbler drying is also not a problem.

Insert a 5-10% wide formwork for the knitted fabric after desibing or sacoping, and set the steam (steam heating 5-10 seconds, vacuum 5 seconds) at 100 to 120 degrees Celsius.

When setting dry heat, please do not exceed 140 degrees Celsius.

When using a hand iron, pay particular attention to the temperature setting (steam 120 degrees Celsius or less).

Be sure to apply the hand iron enough with the same co-fabric to make sure it is all right.

Avoid chlorine bleaching.

Dry cleaning is normal conditions, please wash the laundry put in the net.



Regular Power

Features of SHELLVIENO™

SV80 84dtex(76d) Mix ratio: 8% polyurethane Nylon 92%

SHELLVIENO is a covering yarn made from polyurethane elastic yarn produced under strict quality control for core yarn. It has a number of excellent properties such as durability, knitting, elongation resiliency, and staining fastness, making it ideal for planning all stretch products. It is the standard for knits that are used for all applications of knitting products from rib knit.

Handling precautions

Do not use chlorine bleach.

Please avoid dyeing. However, please confirm the product properness after dyeing according to the dyeing standard of nylon when dyeing after dyeing. If PH becomes 7 or more, it will affect the robustness, so please test the post-processing prescription thoroughly and confirm your fitness. Please avoid hair-burning and silk processing and do not leave it in places where there is acidified gas such as combustion gas such as oil and gas stoves. When using cashmere products for fur processing, please avoid nylon because there is a risk of discoloration (color loss). We recommend The Dasry®2075 polyester covering. The combination pattern of the pre-dyed yarn and white is a problem of color transfer, so please do a preliminary test enough and check properly. Home washing conditions should be up to 40 degrees Celsius, please leave the impression in the shade. Dry cleaning is required under normal conditions. Please decide the iron temperature put the other party material to be used in the code. However, please be less than 120 degrees Celsius.



No Power

Features of SKB300

33dtex(30d) Nylon 100%

It is the only all-purpose reinforcement thread of no power & ultra-weak stretch in the knit industry. It is ideal for reinforcing yarns for yarns that are not strong or elastic, as well as for preventing transparency and unstable knitting. In particular, it is effective with 12-18 gauges. Only the expanded color of the mark Bespoke color is 3.0kg. It is a normal unit price from 5.0kg.

Handling precautions

Knitted geothermal set, please steam set at 100 to 120 degrees C (5-10 seconds). In the case of border yarn, please use one color (3050) to prevent the turbulent size by color. When used for prevention of sheer, we recommend shrinkage or sawing. Please be careful not to catch the watermark pattern and rough fabric, etc.

Please be sure to set the tension at the time of knitting to loosen. If there is a scratch in the sinker and the thread opening, etc. of the knitting machine, please note that it will be the cause of the yarn breakage.

Dasr4[®] series



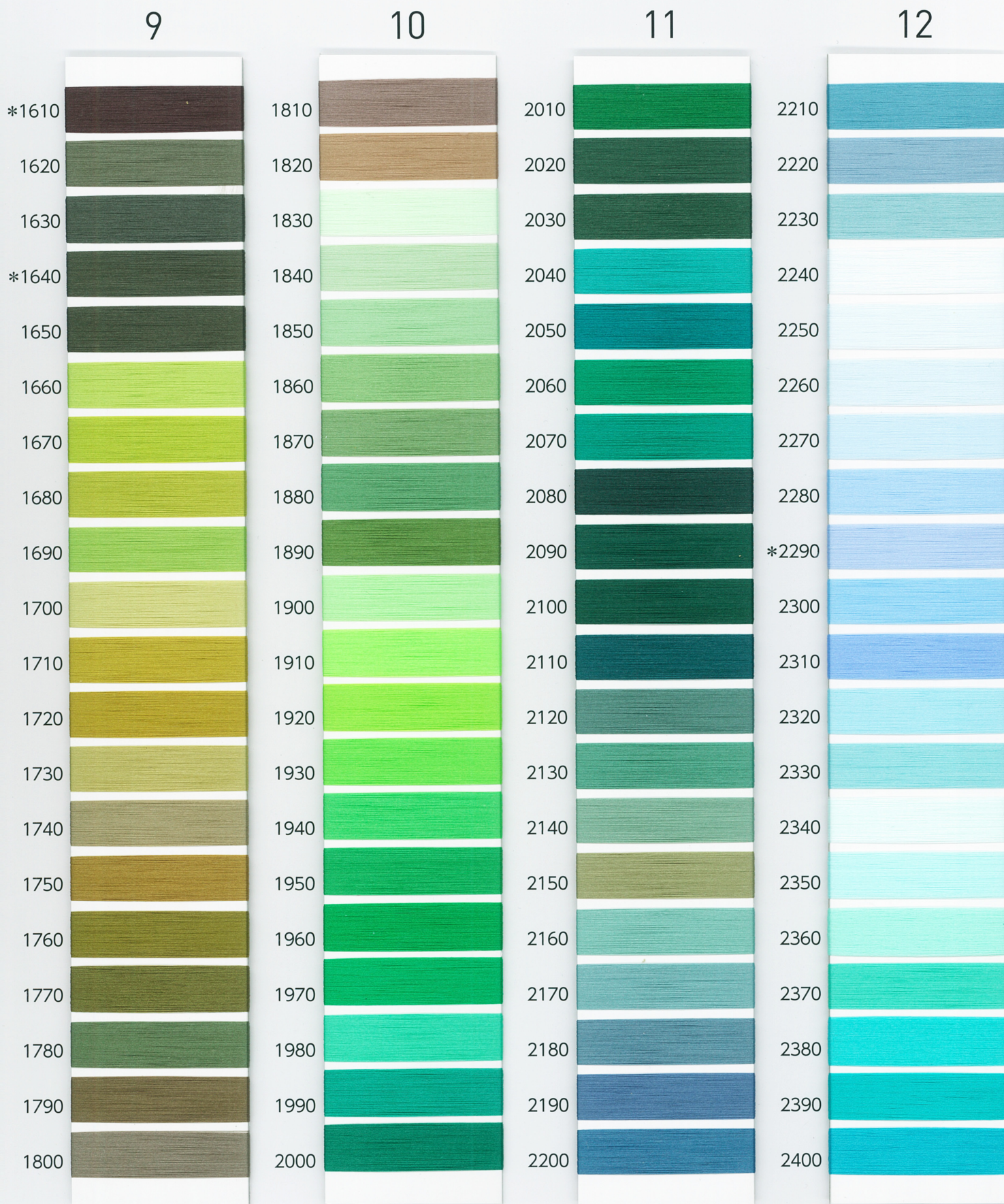
The actual color may differ depending on the viewing environment.

Dasr4[®] series



The actual color may differ depending on the viewing environment.

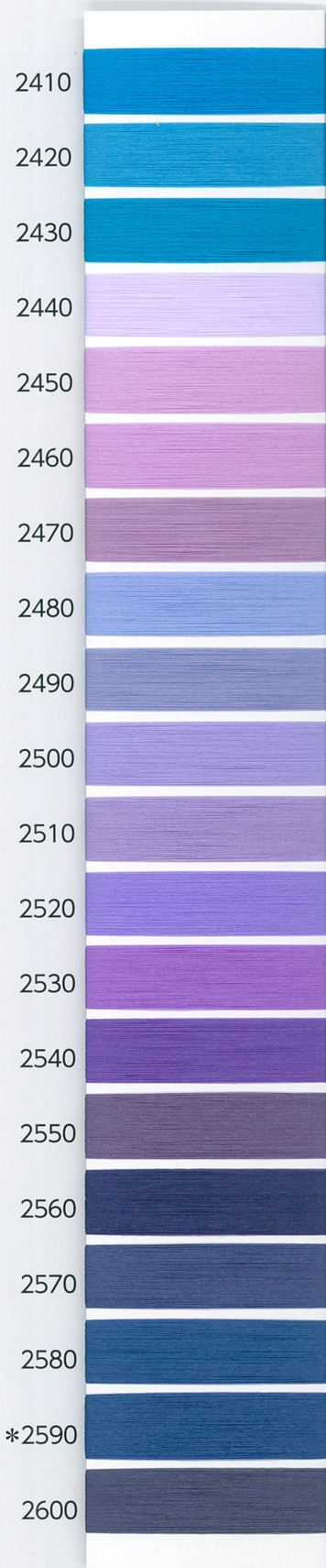
Dasr4[®] series



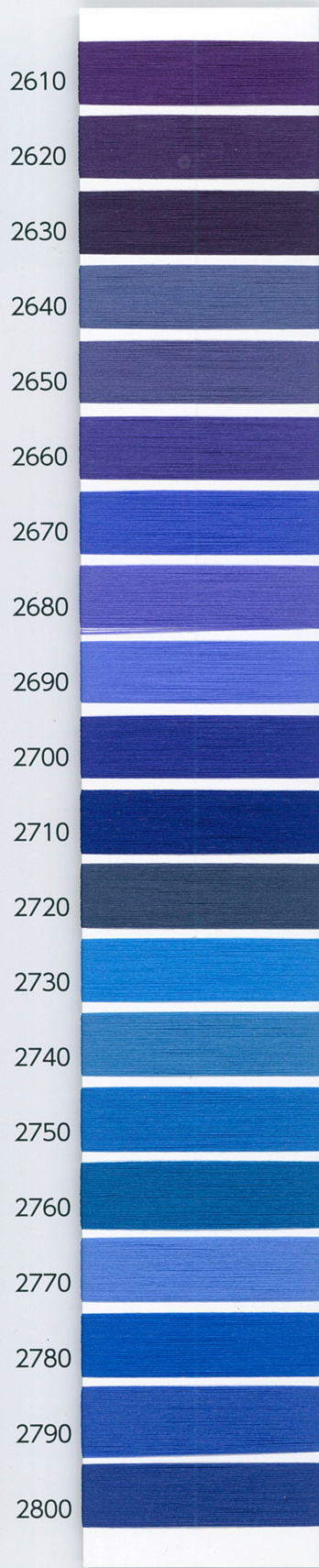
The actual color may differ depending on the viewing environment.

Dasr4[®] series

13



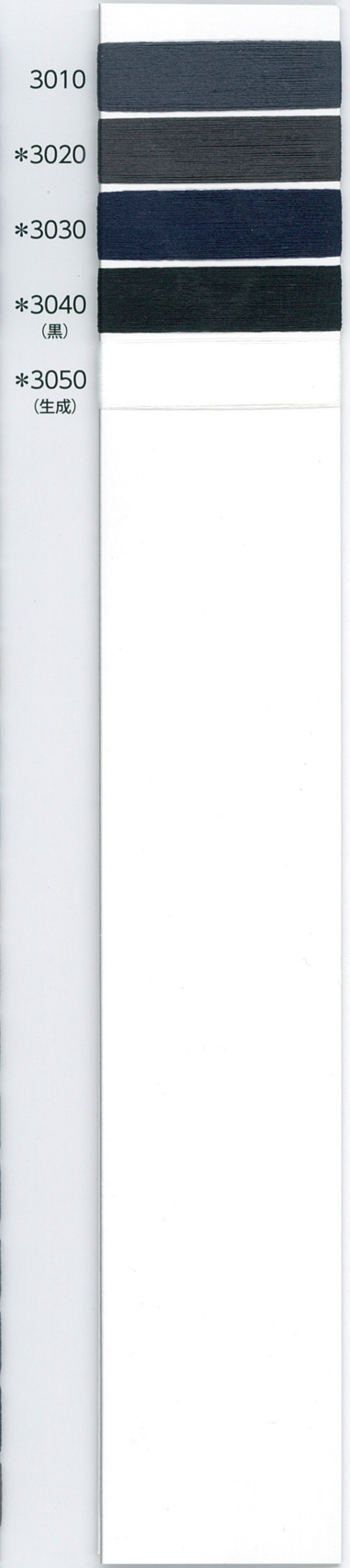
14



15



16



The actual color may differ depending on the viewing environment.

Dasr4[®] series
covering yarn

- EU Agency -

SECOND CO., LTD.

2-7-14 OMIYA ICHINOMIYA AICHI JAPAN 491-0044

TEL: +81-586-25-4180 FAX: +81-586-82-8515

Email: office@second-2.com

マエダ[®]繊維工業株式会社

〒 602-8205 京都市上京区智慧光院通一条下ル

MAEDA TEXTILE COMPANY LTD.

E-MAIL ws_order@maedatex.co.jp

SAGARU ICHIJYO CHIEKON DORI

KAMIKYO-KU KYOTO JAPAN ZIPCODE 602-8205

PHONE 075-431-5815 FAX 075-451-0757